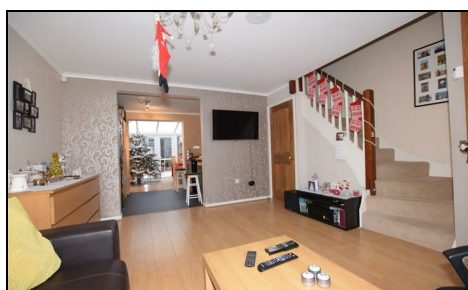


**Heathfield Drive
Mitcham, CR4 3RD**

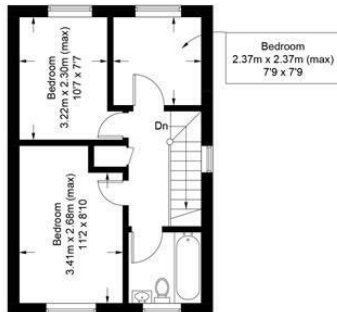
£475,000 Freehold



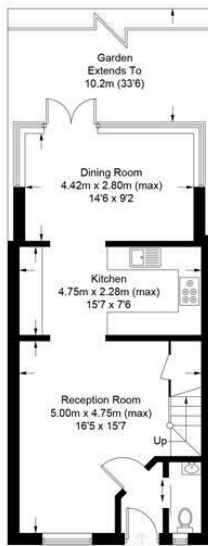
Fantastic well presented three bedroom freehold house with off street parking and no onward chain. Downstairs WC and spacious living accommodation. This is a great home for a family looking to move into the area. Near to transport.

Heathfield Drive, CR4

Approximate Gross Internal Area = 84.1 sq m / 905 sq ft



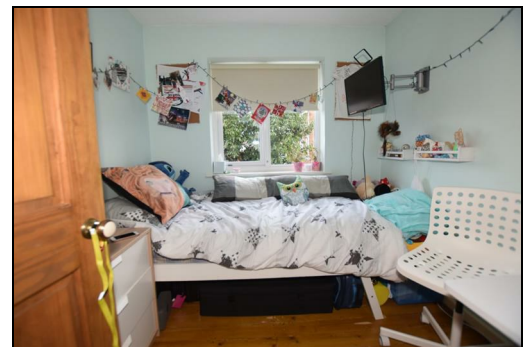
First Floor



Ground Floor

This floor plan is for representation purposes only and is not drawn to scale.
The Gross Internal Area includes outbuildings shown on the plan.
Whilst every attempt has been made to ensure the accuracy of the plan measurements of doors, windows and rooms are approximate only and should be checked before making any decisions reliant upon them.
Copyright Bespokeplans.co.uk (ID404443)

- Off Street Parking
- No Onward Chain
- Spacious Living Accommodation
- Great Family Home
- EPC Rating D
- Viewing Highly Recommended



Energy Efficiency Rating		Environmental Impact (CO ₂) Rating	
Very energy efficient - lower running costs	Current	Potential	Very environmentally friendly - lower CO ₂ emissions
(92 plus) A			(92 plus) A
(81-91) B			(81-91) B
(69-80) C			(69-80) C
(55-68) D			(55-68) D
(39-54) E			(39-54) E
(21-38) F			(21-38) F
(1-20) G			(1-20) G
Not energy efficient - higher running costs		Not environmentally friendly - higher CO ₂ emissions	
EU Directive 2002/91/EC		EU Directive 2002/91/EC	
England & Wales	68	70	69

For Free Mortgage Quote and Best Mortgage Rates, call an Ellisons Mortgage Advisor on 020 8544 0518

Although these particulars are believed to be correct, their accuracy is not guaranteed and they do not form part of any contract.

Ellisons Estate Agents Limited

Registered Office: 4th Floor, Tuition House, St. George's Road, Wimbledon, London SW19 4EU. Registered in England & Wales, company number 7533420